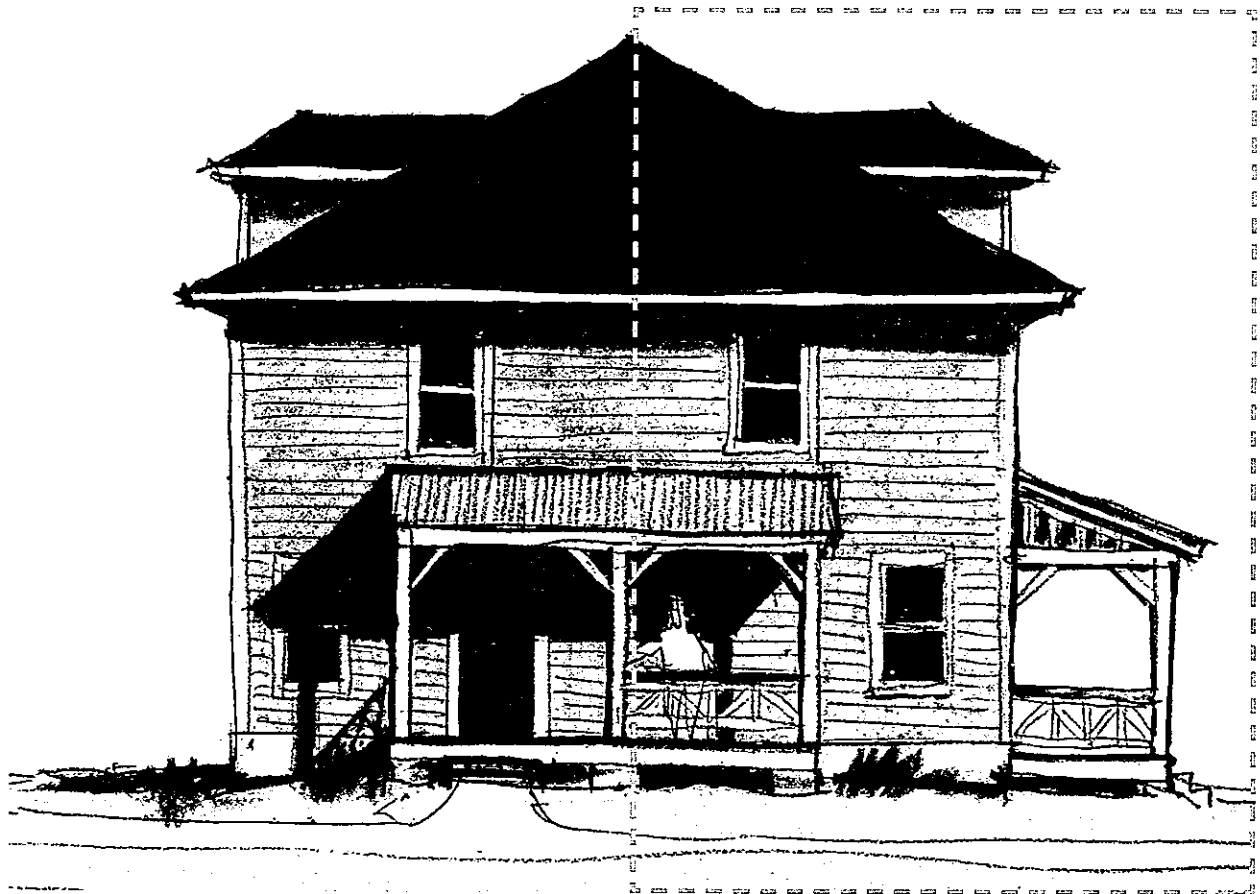


# Snowlily Duplex

3 Bedrooms ☯ 2 Baths ☯ 1-Car Garage ☯ 1,209 Square Feet



## PRAIRIE HOME DUPLEXES

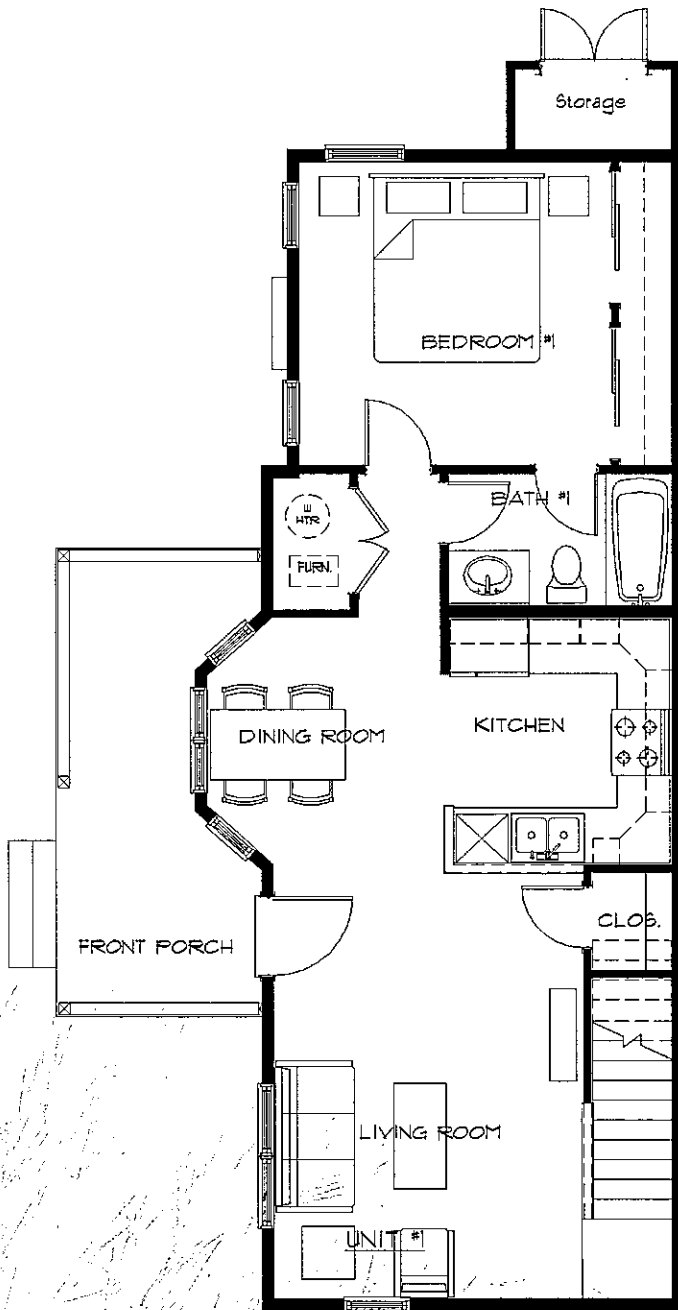
Miller Ranch's 2- and 3-bedroom Prairie Home Duplexes are spacious and comfortable homes that include a 1-car garage and optional unfinished basements. The duplex homes range from approximately 996 to 1,209 square feet. Floor plans include Larkspur, Snowlily, Primrose and Aster.

ASW REALTY PARTNERS RESERVES THE RIGHT TO ALTER ALL PRELIMINARY FLOORPLANS, SPECIFICATIONS, FEATURES, PRICES AND OTHER INFORMATION DESCRIBED IN THE SALES MATERIAL WITHOUT NOTICE OR OBLIGATION. ALL HOME SIZES ARE APPROXIMATE AND MAY VARY DEPENDING UPON THE ELEVATION. THIS DRAWING IS AN ARTIST CONCEPTION ONLY AND DETAILS ARE SUBJECT TO CHANGE.

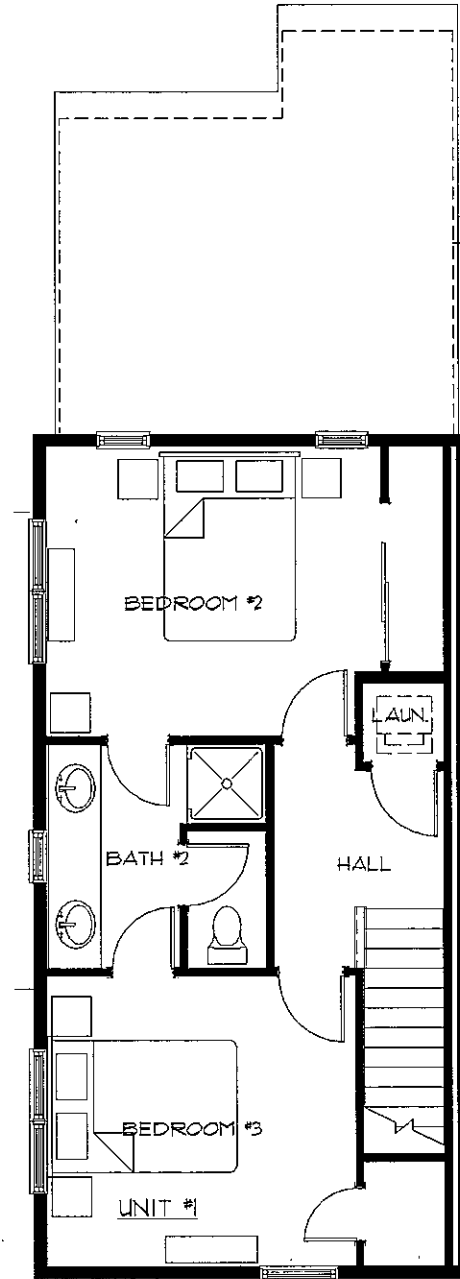


# Snowlily Duplex

3 Bedrooms 2 Baths 1-Car Garage 1,209 Square Feet



**GROUND LEVEL**



**UPPER LEVEL**

ASW REALTY PARTNERS RESERVES THE RIGHT TO ALTER ALL PRELIMINARY FLOORPLANS, SPECIFICATIONS, FEATURES, PRICES AND OTHER INFORMATION DESCRIBED IN THIS BROCHURE WITHOUT NOTICE OR OBLIGATION. ALL HOME SIZES ARE APPROXIMATE AND MAY VARY DEPENDING UPON THE ELEVATION. THIS DRAWING IS AN ARTIST CONCEPTION ONLY AND DETAILS ARE SUBJECT TO CHANGE.